



FALSE-TREAD INSTALLATION GUIDE

OPEN STAIR INSTALLATION

1. Cut a 45 miter on all false risers for the open side of the stair. (see figure 1) Fit and install mitered false risers to mitered skirtboard using glue and finish nails.
2. Place the false treads on the open side of the stair and mark the length needed from the face of one false riser to the face of the next false riser. Always place the false tread on the stair with the non-grooved edge towards the middle of the stair. Cut and fit the false treads to length for the open side of the stair.
3. Cut the miter from the end of the 9" piece of molding that will be towards the middle of the stair. This corner will be used to return the side molding to the skirtboard at the back of the tread. (see figure 3)
4. Finish trimming the 9" molding to fit the false tread. Fit and install the molding to the front edge of the false treads using glue.
5. Trim the 14" side molding to fit the false tread length. (see figure 5)
6. Fit and install the side molding to the false tread using glue.
7. Install the assembled false treads to the stair using glue and finish nails. (see #7)
8. Fit and install the miter return molding to the side molding at the rear of the false treads using glue. (see #8)

figure 1

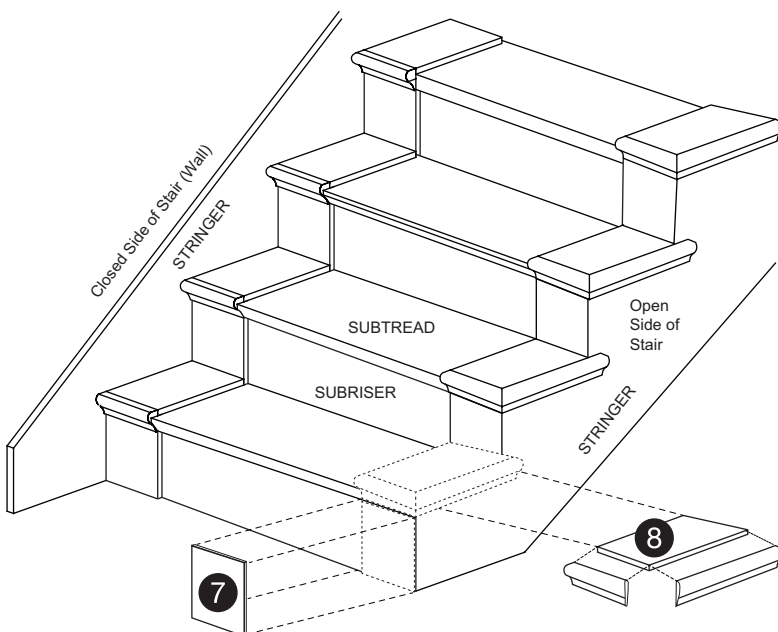


figure 3

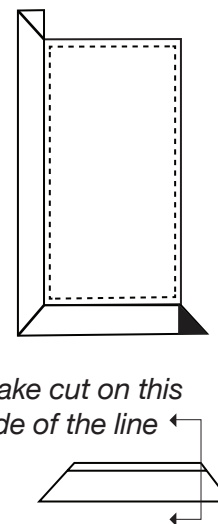
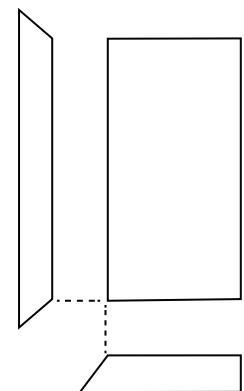


figure 5





FALSE-TREAD INSTALLATION GUIDE

CLOSED STAIR INSTALLATION

1. Fit and install the false risers on the closed side of the stair using glue and finish nails. (see #1)
2. Place the false treads against the skirt board of the stair and mark the length needed from the face of one false riser to the face of the next false riser. Always place the false tread on the stair with the non-grooved edge towards the middle of the stair. Cut and fit the false treads to length.
3. Cut the miter from one end of the 9" molding. Hold the molding against the front of the false tread and mark for finish length. Cut to finish length and install on the false tread using glue and finish nails. (figure 3)
4. Install the assembled false tread to the stair using glue and finish nails. (see #3)

figure 3

